

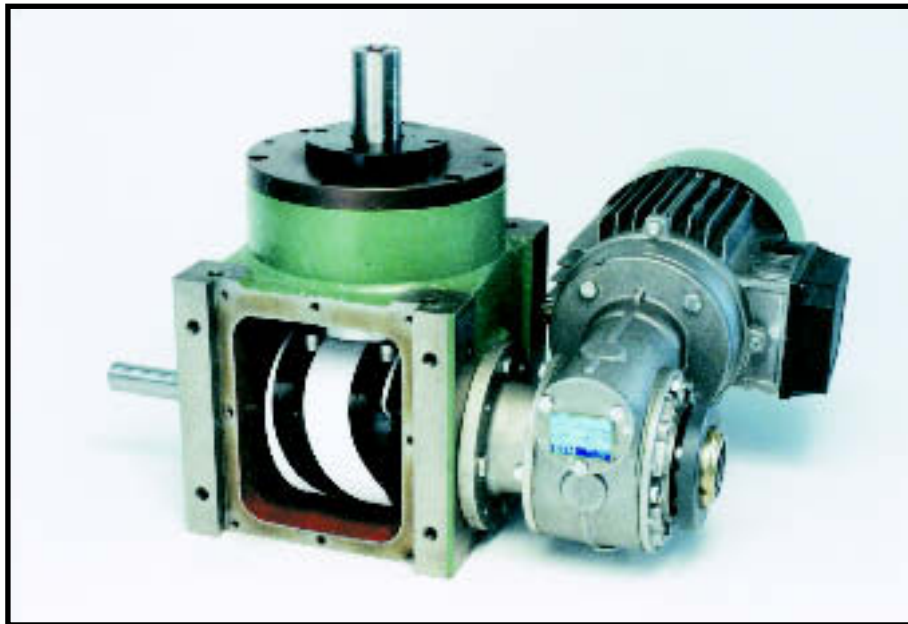
# HIGH SPEED

**700 Cycles Per Minute**

**Indexing  
2 to 36 Stations  
Model ITV**

**OR**

**Oscillating  
30°, 45°, 60°, 75°, 90°  
Model OTV**



autorotor  
autorotor  
autorotor

**EASOM** AUTOMATION SYSTEMS, INC.

"Excellence in Automation Systems"

32471 INDUSTRIAL DRIVE • MADISON HEIGHTS, MI 48071  
**PHONE (248) 307-0650 • FAX (248) 307-0701**  
WWW.EASOMENG.COM • WWW.INDEXING-DEVICES.COM

The Autorotor ITV Series High Speed Intermittent drive is a mechanical right angle drive machine. Mechanical cam and cam followers transform the input shafts constant speed to a predetermined intermittent output rotation.

### **FEATURES:**

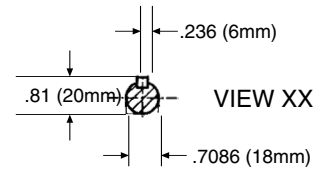
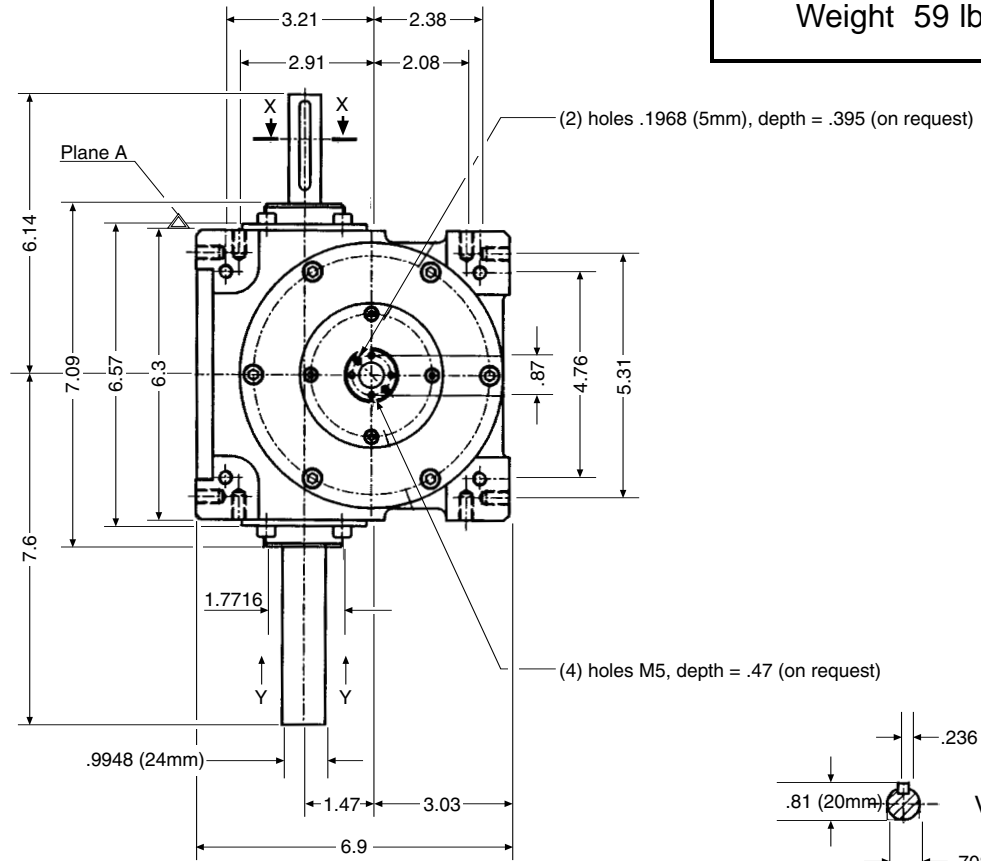
- High speed with complete control of the intermittent rotation of the output shaft.
- 700 Cycles (Indexes and dwells) per minute is considered average. This may vary dependent upon the inertia generated by your application and the number of stations being used.
- The helix of the barrel cam is heat treated and ground to insure long life and superior fit for the barrel cam and cam follower bearings.
- The intermittent drive is pre-loaded in the dwell portion of the cam to provide a stable location.
- No vibrations are generated by the intermittent drive.
- Rotation can be either clockwise or counter-clockwise.
- Low maintenance required.
- Lower input power required.
- High repeatability  $+.0004''/-0.0004''$  at cam follower working radius.
- Each cycle can be 20% to 25% movement, or 75% to 80% dwell time.

Motor size, gear box and flange mount to the indexer, are specified and dimensioned on the print that is forwarded with the quotation. Limit switch with cam actuation is made from the through shaft.

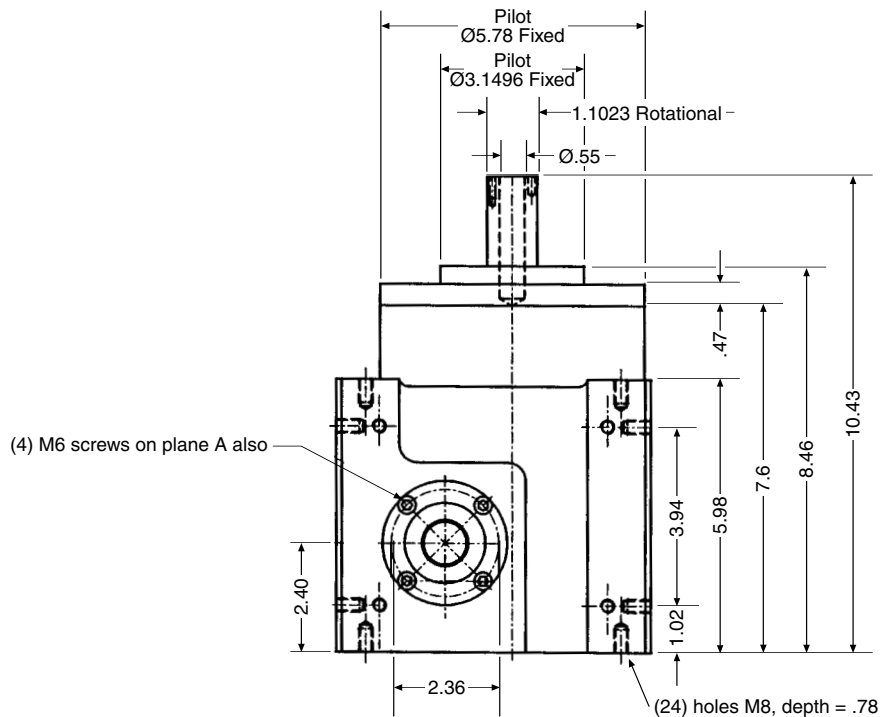
**DIMENSIONS ARE ORIGINALLY METRIC, CONVERTED TO INCHES.  
TO CONVERT INCHES TO MILLIMETERS, MULTIPLY INCHES BY 25.4.**

AVAILABLE ON C.A.D. DISC  
IN METRIC DIMENSIONS  
FILE NO. W41114

MODEL  
ITV-10/OTV-10  
Weight 59 lbs.



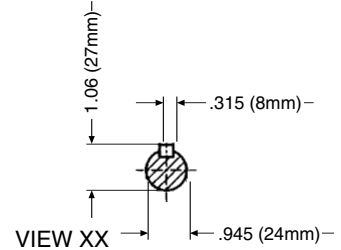
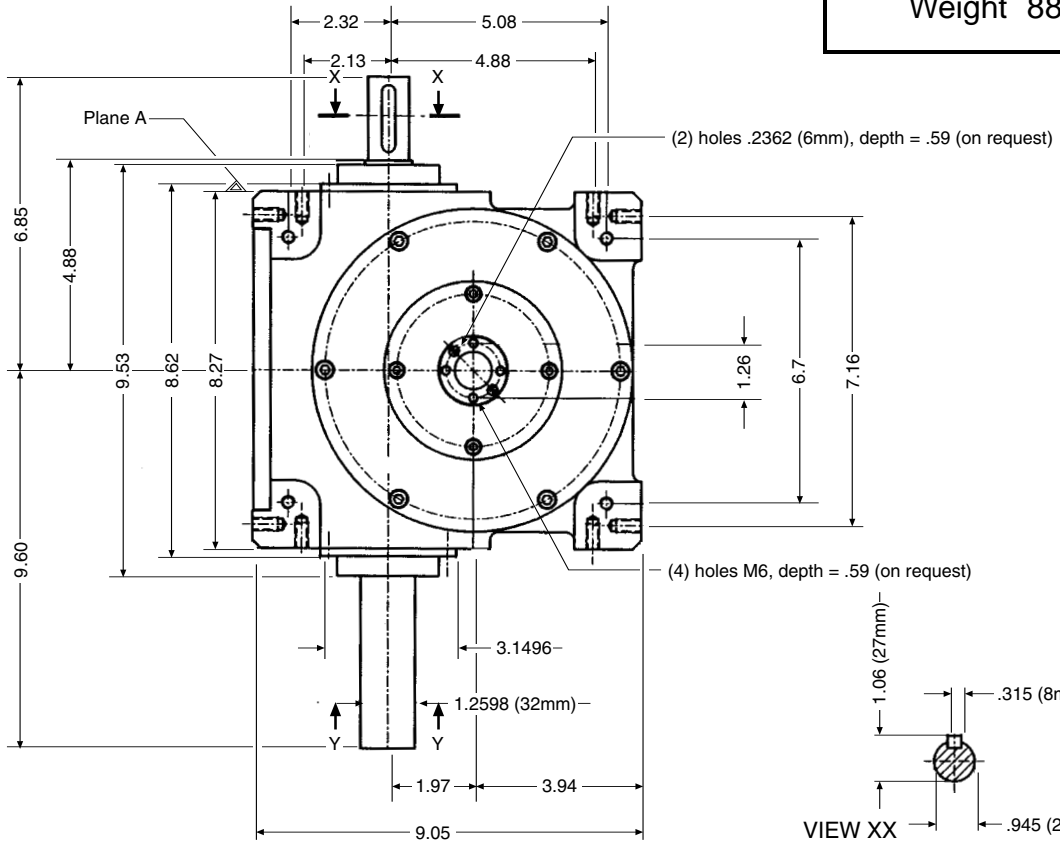
Shaft for Cam, Limit  
Switch Shown.  
If Gear Box is Mounted  
to View XX Shaft XX  
becomes YY and Shaft YY  
becomes Shaft XX



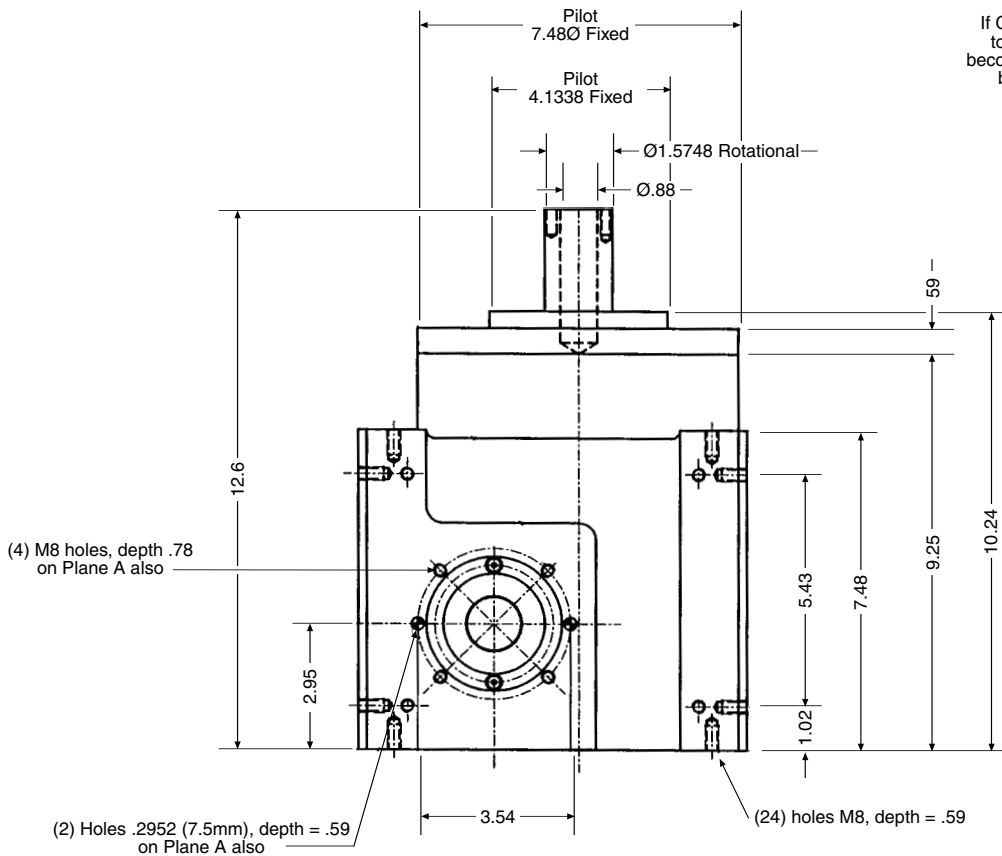
Lubricant: 1-6/10 Qt. Mobil Oil Co. - D.T.E. Medium

AVAILABLE ON C.A.D. DISC  
IN METRIC DIMENSIONS  
FILE NO. W41126

MODEL  
ITV-15/OTV-15  
Weight 88 lbs.



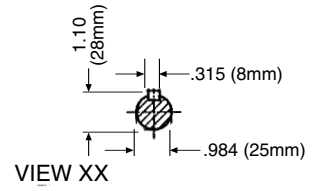
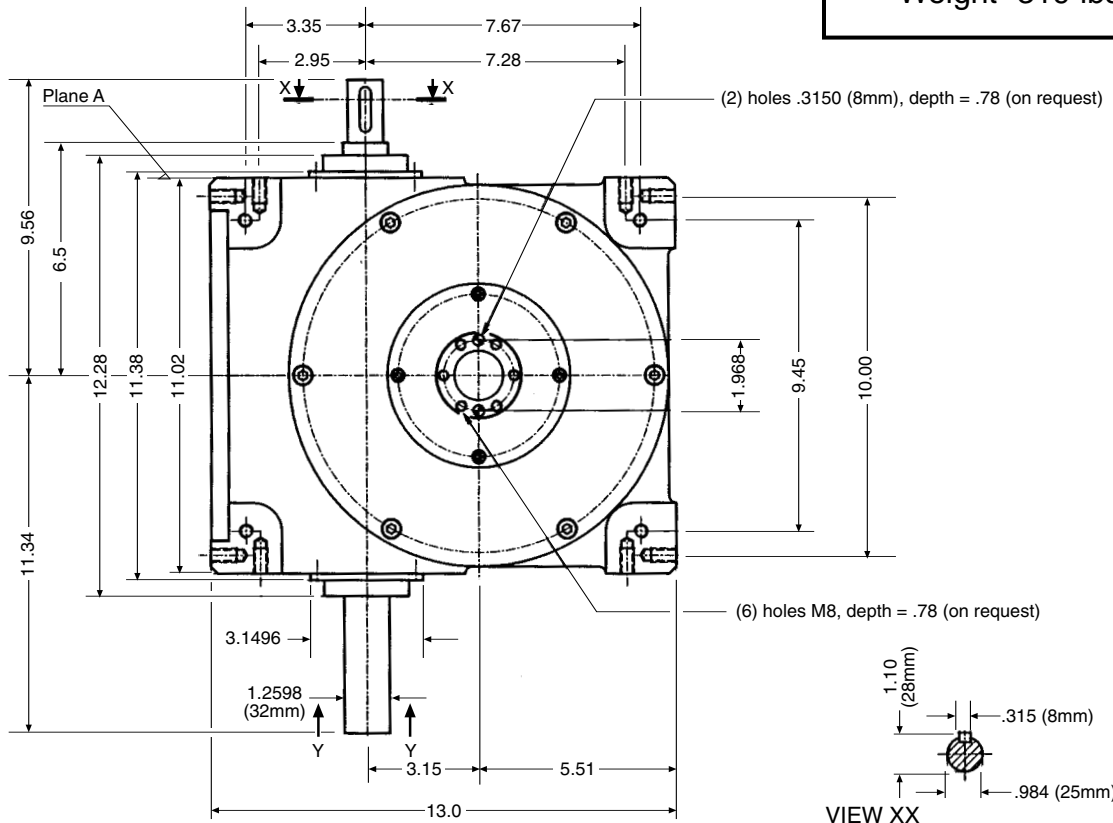
Shaft for Cam, Limit  
Switch Shown.  
If Gear Box is Mounted  
to View XX Shaft XX  
becomes YY and Shaft YY  
becomes Shaft XX



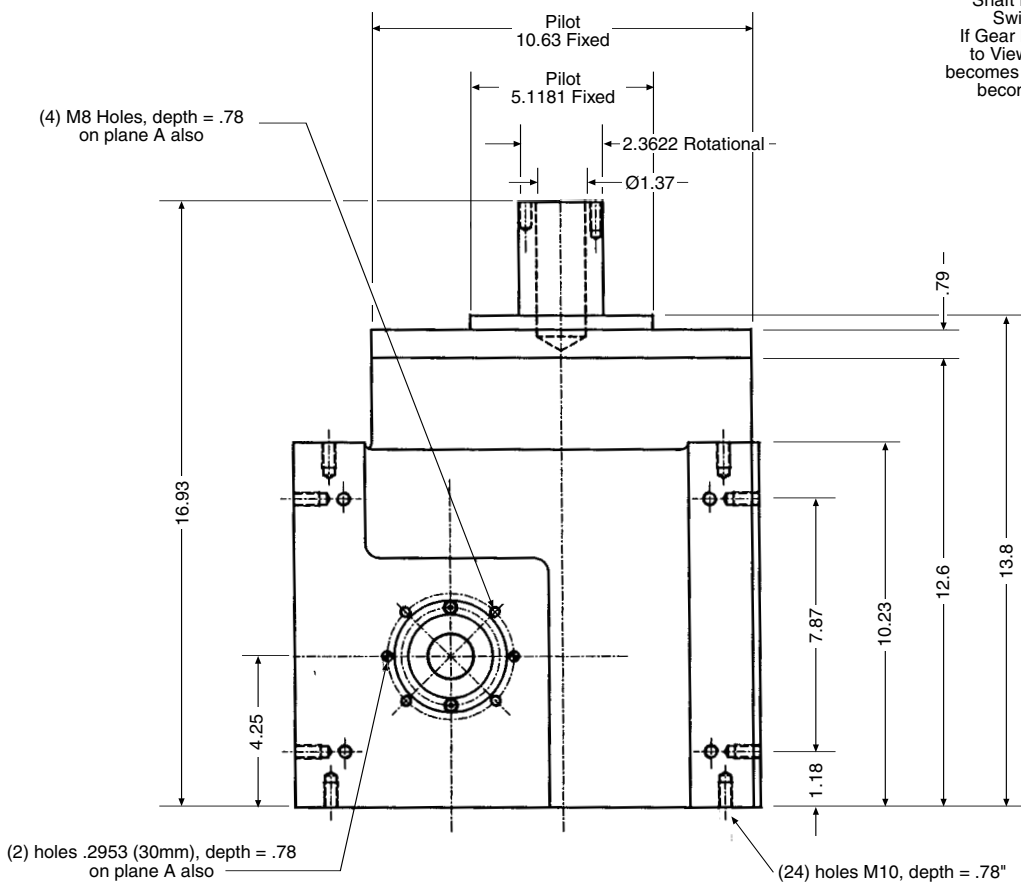
Lubricant: 2-1/10 Qt. Mobil Oil Co. - D.T.E. Medium

AVAILABLE ON C.A.D. DISC  
IN METRIC DIMENSIONS  
FILE NO. W41127

MODEL  
ITV-25/OTV-25  
Weight 319 lbs.



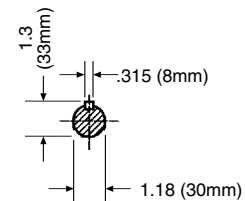
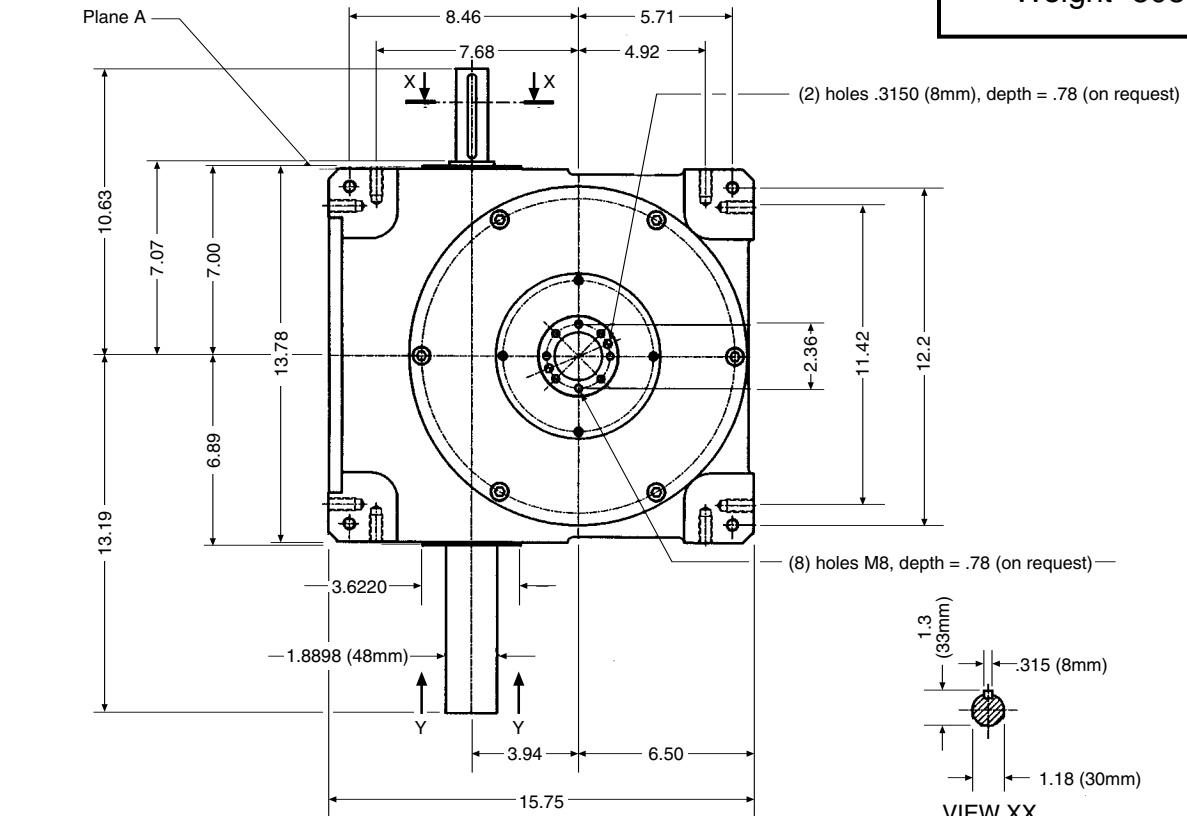
Shaft for Cam, Limit  
Switch Shown.  
If Gear Box is Mounted  
to View XX Shaft XX  
becomes YY and Shaft YY  
becomes Shaft XX



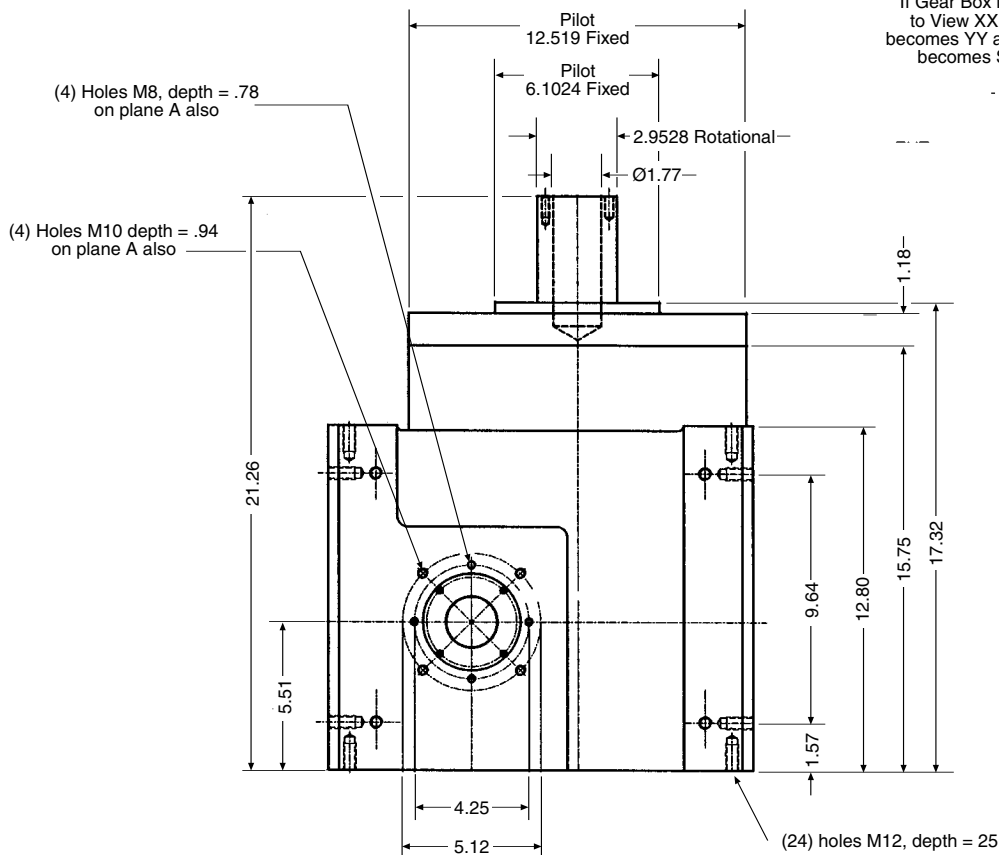
Lubricant: 1-8/10 Gal. Mobil Oil Co. - D.T.E. Medium

AVAILABLE ON C.A.D. DISC  
IN METRIC DIMENSIONS  
FILE NO. W41006

MODEL  
ITV-35/OTV-35  
Weight 508 lbs.



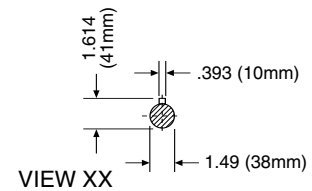
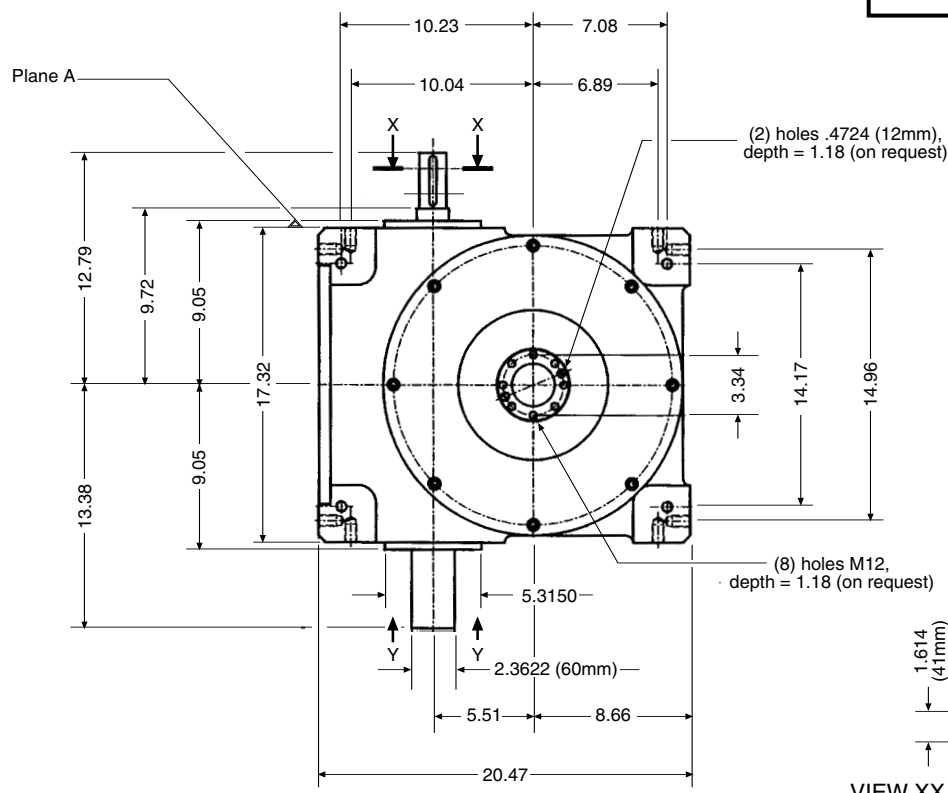
VIEW XX  
Shaft for Cam, Limit  
Switch Shown.  
If Gear Box is Mounted  
to View XX Shaft XX  
becomes YY and Shaft YY  
becomes Shaft XX



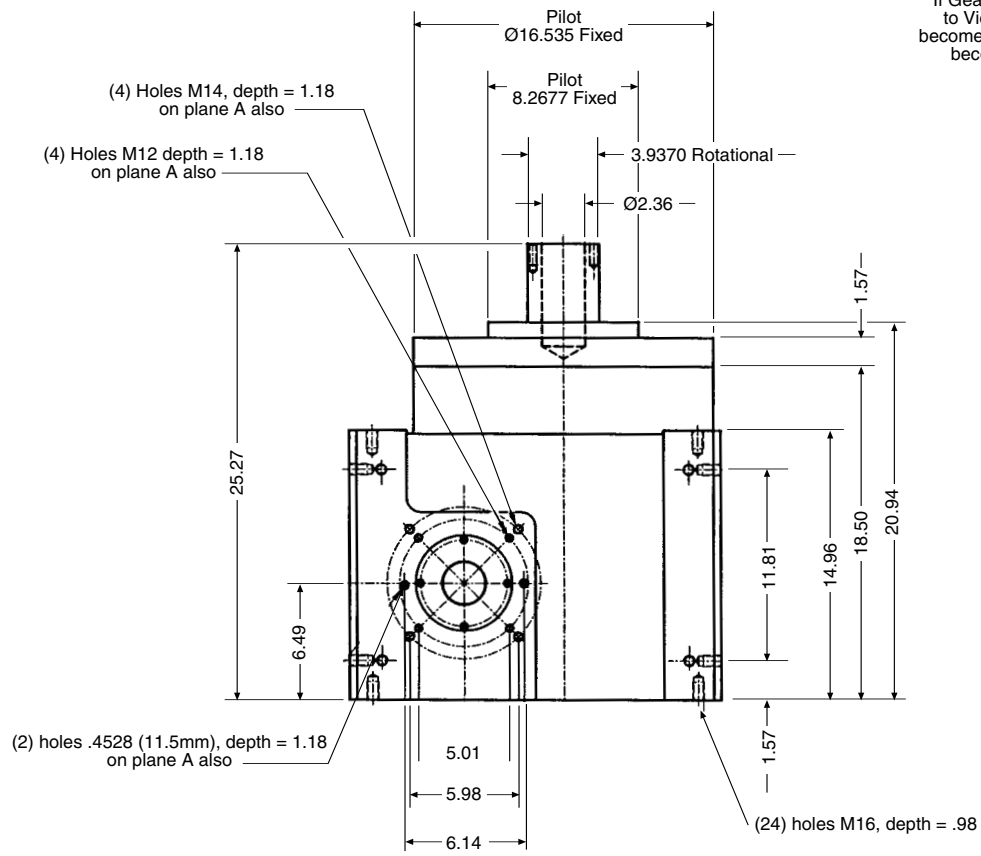
Lubricant: 2-6/10 Gal. Mobil Oil Co. - D.T.E. Medium

AVAILABLE ON C.A.D. DISC  
 IN METRIC DIMENSIONS  
 FILE NO. W41128

MODEL  
 ITV-55/OTV-55  
 Weight 1034 lbs.



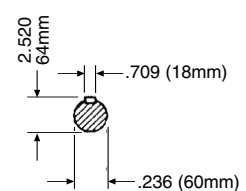
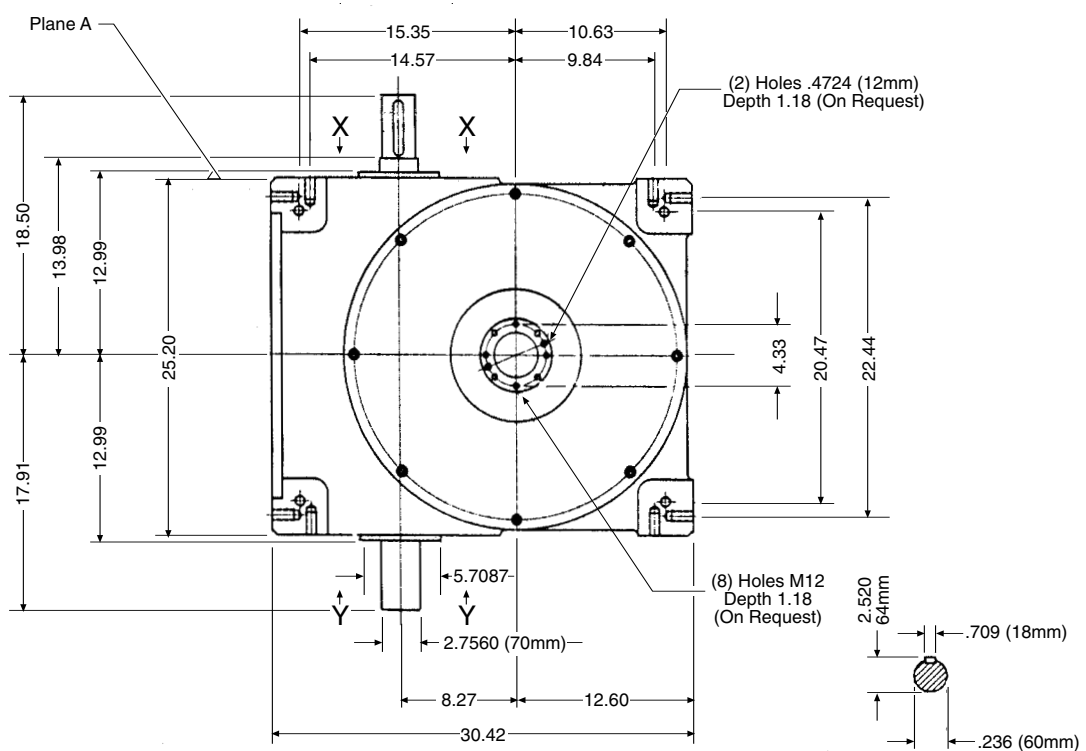
Shaft for Cam, Limit  
 Switch Shown.  
 If Gear Box is Mounted  
 to View XX Shaft XX  
 becomes YY and Shaft YY  
 becomes Shaft XX



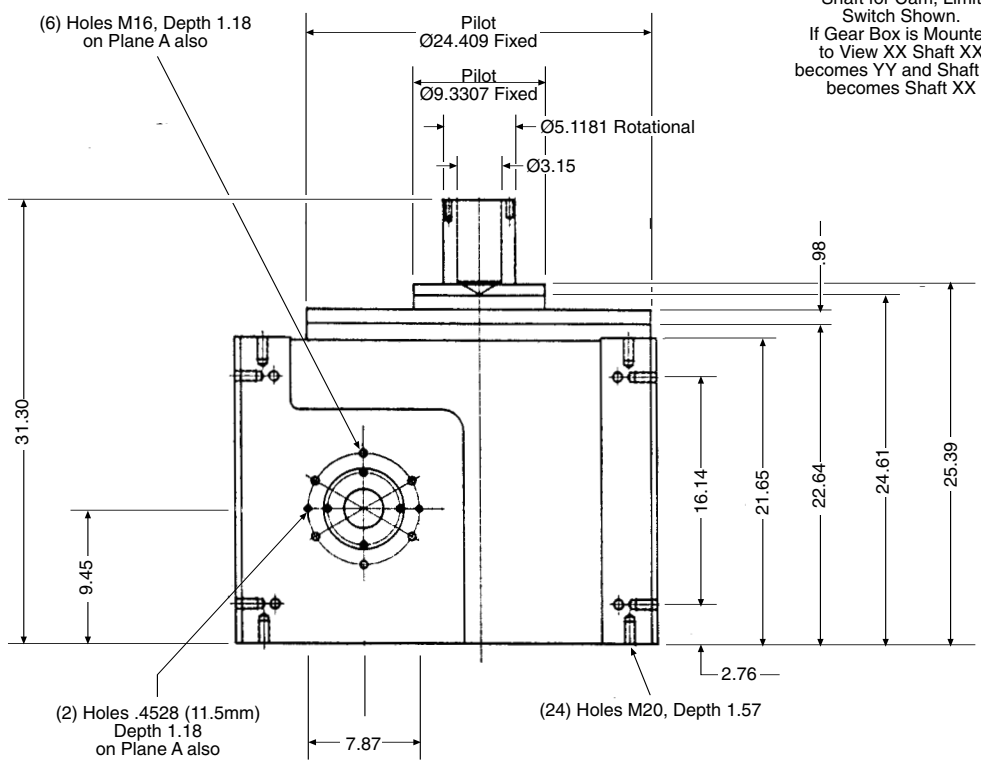
Lubricant: 4-7/10 Gal. Mobil Oil Co. - D.T.E. Medium

AVAILABLE ON C.A.D. DISC  
 IN METRIC DIMENSIONS  
 FILE NO. W41114

MODEL  
**ITV-75/OTV-75**  
 Weight 2420 lbs.



**View XX**  
 Shaft for Cam. Limit  
 Switch Shown.  
 If Gear Box is Mounted  
 to View XX Shaft XX  
 becomes YY and Shaft YY  
 becomes Shaft XX



**Lubricant: 10-4/10 Gal. Mobil Oil Co. - D.T.E. Medium**

Call for  
TECMES  
brochure.



**3 Models Available  
8 to 36 Stations**

# **TECMES**

**ASSEMBLY MACHINES**

Complete with index table, pick and place, and rise and fall for up to 90 assemblies per minute - ready for your tooling.

---

**EASOM** AUTOMATION SYSTEMS, INC.

"Excellence in Automation Systems"

32471 INDUSTRIAL DRIVE • MADISON HEIGHTS, MI 48071  
**PHONE (248) 307-0650 • FAX (248) 307-0701**  
WWW.EASOMENG.COM • WWW.INDEXING-DEVICES.COM